

SINGLE

Technical Data Book

Console 5.2kW, Ceiling 5.2/7.1kW (for EU)

SAMSUNG

Version	Modification	Date	Remark
Ver.1.0	Release SINGLE Console and Ceiling for Europe (R410A, 50Hz, H/P) TDB	14.04.24	
Ver.1.1	Add Note information in Specification regarding EU F-Gas regulation.	15.06.16	
Ver.1.2	Modification of the Note information in Specification.	16.02.02	

Index

1 Nomenclature

2 Specifications (Indoor)

3 Capacity table

4 Dimensional drawing (Indoor)

5 Electrical wiring diagram (Indoor)

6 Sound pressure level (Indoor)

7 Sound power level (Indoor)

8 Sound power level (Outdoor)

1 Nomenclature

Indoor Units

Model Names

AC	026	H	B	M	D	E	H	/	EU
(1)	(2)	(3)	(4)	(5)	(6)	(7)	(8)		Buyer

(1) Classification

AC	CAC
----	-----

(2) Capacity

x 1/10 kW (3 digits)

(3) Version

E	2012
F	2013
H	2014

(4) Product Type

B	Indoor Unit
C	Outdoor Unit

(5) Product Notation

1	1Way Cassette
N	4Way Cassette S (600 X 600)
4	4Way Cassette S
L	LSP Duct
M	MSP Duct
C	Ceiling
J	Console
A	Wall-Mounted

(6) Feature

F	Flagship
S	Standard
D	Deluxe
P	Premium

(7) Rating Voltage

E	1Ø, 220~240V, 50Hz
G	3Ø, 380~415V, 50Hz
K	1Ø, 220~240V, 50/60Hz

(8) Mode

H	Heat Pump(R410A)
C	Cooling Only(R410A)
E	Heat Pump(R22)
D	Cooling Only(R22)

1 Nomenclature

Outdoor Units

Model Names

AC	026	H	C	B	D	E	H	/	EU
(1)	(2)	(3)	(4)	(5)	(6)	(7)	(8)		Buyer

(1) Classification

AC	CAC
----	-----

(2) Capacity

x 1/10 kW (3 digits)

(3) Version

E	2012
F	2013
H	2014

(4) Product Type

B	Indoor Unit
C	Outdoor Unit

(5) Feature 1

A	Inv+Side+General Temp
B	Non Inv+Side+General Temp

(6) Feature2

F	Standrad+Tropical+Non Module
S	Standard
D	Deluxe
P	Premium

(7) Rating Voltage

E	1Ø, 220~240V, 50Hz
G	3Ø, 380~415V, 50Hz
K	1Ø, 220~240V, 50/60Hz
N	3Ø, 380~415V, 50/60Hz

(8) Mode

H	Heat Pump(R410A)
C	Cooling Only(R410A)
E	Heat Pump(R22)
D	Cooling Only(R22)

2 Specifications

Console

Type				Console			
Model Name	Indoor Unit			AC052HBJDEH/EU			
	Outdoor Unit			AC052FCADEH/EU			
System	Mode			Heat Pump			
	Capacity	Cooling(Min/Std/Max)		kW	1.90 / 5.00 / 5.50		
				Btu/h	6,500 / 17,100 / 18,800		
		Heating(Min/Std/Max)		kW	1.50 / 5.60 / 6.50		
				Btu/h	5,100 / 19,100 / 22,200		
	Power	Power Input (Nominal)	Cooling(Min/Std/Max)		kW	0.25 / 1.78 / 2.20	
			Heating(Min/Std/Max)		kW	0.25 / 1.92 / 2.50	
		Current Input (Nominal)	Cooling(Min/Std/Max)		A	2.60 / 8.00 / 10.00	
			Heating(Min/Std/Max)		A	2.30 / 8.70 / 14.00	
		MCA			A	10.80 (MCA)	
		MFA			A	13.13	
	Energy Efficiency	EER (Nominal Cooling)			-	2.81	
		COP (Nominal Heating)			-	2.92	
		Energy Grade			-	SEER 5.40 (A)	
					-	SCOP 3.80 (A)	
	Piping Connections	Liquid Pipe		Ø, mm	6.35		
				Ø, inch	1/4"		
		Gas Pipe		Ø, mm	12.70		
				Ø, inch	1/2"		
		Installation Limitation	Max. Length	m	30 (35)		
			Max. Height	m	20 (20)		
	Field Wiring	Power Source Wire		Ø, mm	2.00		
		Transmission Cable		Ø, mm	0.75 ~ 1.25		
	Refrigerant	Type			R410A		
Control Method			-				
Factory Charging			kg				
				1.40			
Indoor Unit	Power Supply			Ø, #, V, Hz	1,2,220-240,50		
	Fan	Type		Turbo Fan/BLDC			
		Motor	Output		W	35 x 1	
			Air Flow Rate	High/Mid/Low	CMM	13.00 / 11.50 / 10.00	
					l/s	216.67 / 191.67 / 166.67	
		External Static Pressure	Min/Std/Max	mmAq	-		
				Pa	-		
	Drain			Drain Pipe	Ø,mm		
				ID18 HOSE			
	Sound	Pressure	High/Mid/Low	44.0 / 34.5 / 25.0			
		Power	Cooling	dB(A)			
				60.0			
	External Dimension	Net Weight			kg	15.20	
		Shipping Weight			kg	20.30	
		Net Dimensions (WxHxD)			mm	720 x 620 x 199	
		Shipping Dimensions (WxHxD)			mm	810 x 710 x 299	
	Panel Size	Panel model			-		
		Panel Net Weight			kg	-	
		Shipping Weight			kg	-	
		Net Dimensions (WxHxD)			mm	-	
		Shipping Dimensions (WxHxD)			mm	-	
	Additional Accessories	Drain pump	Drain pump	-			
		Max. Lifting	Max. Lifting	mm/liter/h	-		
	Air Filter			-			
Outdoor Unit	Power Supply			Ø, #, V, Hz	1,2,220-240,50		
	Compressor	Type		Twin BLDC Rotary			
		Model		UG4T150FUDJQDO			
		Output		kW	1.37		
		Oil	Type	-			
				POE			
	Fan	Air Flow Rate	Cooling	CMM	33.00		
					l/s	550.00	
	Sound	Pressure	Cooling/Heating	49.0 / 49.0			
		Power	Cooling	dB(A)			
				64.0			
	External Dimension	Net Weight			kg	38.50	
		Shipping Weight			kg	42.50	
		Net Dimensions (WxHxD)			mm	790 x 548 x 285	
		Shipping Dimensions (WxHxD)			mm	926 x 655 x 382	
	Operating Temp. Range	Cooling		°C	-15.0 ~ 46.0		
		Heating		°C	-15.0 ~ 24.0		

* All figures comply with EN14511

- Nominal cooling capacities are based on;

Indoor temperature : 27°C DB, 19°C WB / Outdoor temperature : 35°C DB, Refrigerant piping : 5m , Level differences : 0m

- Nominal heating capacities are based on;

Indoor temperature : 20°C DB, 15°C WB / Outdoor temperature : 7°C DB, 6°C WB, Refrigerant piping : 5m, Level differences : 0m

- Sound level was acquired in an anechoic room. Thus actual noise level may be different depending on the installation conditions.

- Specifications may be subject to change without prior notice.

- These products contain R410A which is fluorinated greenhouse gas.

2 Specifications

Ceiling

Type				Ceiling	Ceiling	
Model Name	Indoor Unit			AC052HBCDEH/EU	AC071HBCDEH/EU	
	Outdoor Unit			AC052FCADEH/EU	AC071FCADEH/EU	
System	Mode			Heat Pump	Heat Pump	
	Capacity	Cooling(Min/Std/Max)		kW	1.70 / 5.00 / 5.60	2.20 / 7.10 / 8.00
				Btu/h	5,800 / 17,100 / 19,100	7,500 / 24,200 / 27,300
		Heating(Min/Std/Max)		kW	1.70 / 6.00 / 7.70	1.90 / 8.00 / 9.00
				Btu/h	5,800 / 20,500 / 26,300	6,500 / 27,300 / 30,700
	Power	Power Input (Nominal)	Cooling(Min/Std/Max)	kW	0.48 / 1.66 / 1.90	0.35 / 2.36 / 4.00
			Heating(Min/Std/Max)		0.43 / 1.87 / 3.05	0.35 / 2.75 / 4.00
		Current Input (Nominal)	Cooling(Min/Std/Max)	A	2.80 / 7.80 / 9.00	2.00 / 10.50 / 21.00
			Heating(Min/Std/Max)		2.40 / 8.80 / 14.50	2.00 / 12.60 / 21.00
		MCA		A	10.80 (MCA)	20.30 (MCA)
		MFA		A	13.13	25.00
	Energy Efficiency	EER (Nominal Cooling)		-	3.01	3.01
		COP (Nominal Heating)		-	3.21	2.91
		Energy Grade		-	SEER 5.90 (A+)	SEER 5.30 (A)
				-	SCOP 3.80 (A)	SCOP 3.80 (A)
	Piping Connections	Liquid Pipe		Ø, mm	6.35	6.35
				Ø, inch	1/4"	1/4"
		Gas Pipe		Ø, mm	12.70	15.88
				Ø, inch	1/2"	5/8"
		Installation Limitation	Max. Length	m	30 (35)	50 (55)
Max. Height			m	20 (20)	30 (30)	
Field Wiring	Power Source Wire		Ø, mm	2.00	2.50 ~ 4.00	
	Transmission Cable		Ø, mm	0.75 ~ 1.25	0.75 ~ 1.25	
Refrigerant	Type		-	R410A	R410A	
	Control Method		-	-	-	
	Factory Charging		kg	1.40	1.80	
Indoor Unit	Power Supply		Ø, #, V, Hz	1,2,220-240,50	1,2,220-240,50	
	Fan	Type		-	Blower	Blower
		Motor	Output	W	40 x 2	40 x 2
		Air Flow Rate	High/Mid/Low	CMM	13.50 / 12.50 / 11.50	16.50 / 15.00 / 14.00
				l/s	225.00 / 208.33 / 191.67	275.00 / 250.00 / 233.33
		External Static Pressure	Min/Std/Max	mmAq	-	-
			Pa	-	-	
	Drain	Drain Pipe		Ø,mm	ID18 HOSE	ID18 HOSE
	Sound	Pressure	High/Mid/Low		41.0 / 39.0 / 37.0	46.0 / 44.0 / 42.0
		Power	Cooling	dB(A)	60.0	64.0
	External Dimension	Net Weight		kg	20.00	22.50
		Shipping Weight		kg	26.00	26.50
		Net Dimensions (WxHxD)		mm	1,000 x 200 x 650	1,000 x 200 x 650
		Shipping Dimensions (WxHxD)		mm	1,080 x 300 x 730	1,080 x 300 x 730
	Panel Size	Panel model		-	-	-
		Panel Net Weight		kg	-	-
		Shipping Weight		kg	-	-
		Net Dimensions (WxHxD)		mm	-	-
	Additional Accessories	Shipping Dimensions (WxHxD)		mm	-	-
		Drain pump	Drain pump	-	-	-
Max. Lifting			mm/liter/h	-	-	
Air Filter			-	-	-	
Outdoor Unit	Power Supply		Ø, #, V, Hz	1,2,220-240,50	1,2,220-240,50	
	Compressor	Type		-	Twin BLDC Rotary	Twin BLDC Rotary
		Model		-	UG4T150FUDJQDO	UG4T200FUAE4
		Output		kW	1.37	1.79
	Oil	Type		-	POE	POE
	Fan	Air Flow Rate	Cooling	CMM	33.00	52.00
				l/s	550.00	866.67
	Sound	Pressure	Cooling/Heating		49.0 / 49.0	49.0 / 51.0
		Power	Cooling	dB(A)	64.0	66.0
	External Dimension	Net Weight		kg	38.50	55.00
		Shipping Weight		kg	42.50	59.00
		Net Dimensions (WxHxD)		mm	790 x 548 x 285	880 x 798 x 310
		Shipping Dimensions (WxHxD)		mm	926 x 655 x 382	1,024 x 920 x 414
	Operating Temp. Range	Cooling		°C	-15.0 ~ 46.0	-15.0 ~ 46.0
		Heating		°C	-15.0 ~ 24.0	-20.0 ~ 24.0

* All figures comply with EN14511

- Nominal cooling capacities are based on;

Indoor temperature : 27°C DB, 19°C WB / Outdoor temperature : 35°C DB, Refrigerant piping : 5m , Level differences : 0m

- Nominal heating capacities are based on;

Indoor temperature : 20°C DB, 15°C WB / Outdoor temperature : 7°C DB, 6°C WB, Refrigerant piping : 5m, Level differences : 0m

- Sound level was acquired in an anechoic room. Thus actual noise level may be different depending on the installation conditions.

- Specifications may be subject to change without prior notice.

- These products contain R410A which is fluorinated greenhouse gas.

3 Capacity table

Console

AC052HBJDEH/EU + AC052FCADEH/EU

Cooling

TC(Total Capacity), SHC(Sensible Heat Capacity), PI(Power Input)

Outdoor temperature (°C, DB)	Indoor temperature (°C, WB)																	
	14.0			16.0			18.0			19.0			22.0			24.0		
	TC	SHC	PI	TC	SHC	PI	TC	SHC	PI	TC	SHC	PI	TC	SHC	PI	TC	SHC	PI
	kW	kW	kW	kW	kW	kW	kW	kW	kW	kW	kW	kW	kW	kW	kW	kW	kW	kW
-15.0	5.37	4.03	0.91	5.51	4.13	0.93	5.64	4.23	0.96	5.78	4.34	0.98	5.92	4.44	1.00	6.06	4.55	1.03
21.0	5.46	4.09	1.25	5.59	4.19	1.28	5.73	4.30	1.31	5.87	4.40	1.34	6.01	4.51	1.37	6.16	4.62	1.41
35.0	4.65	3.49	1.65	4.76	3.57	1.70	4.88	3.66	1.74	5.00	3.75	1.78	5.12	3.84	1.82	5.24	3.93	1.87
46.0	4.26	3.19	2.18	4.36	3.27	2.24	4.47	3.35	2.29	4.58	3.44	2.35	4.69	3.52	2.41	4.80	3.60	2.46

Heating

TC : Total Capacity, PI: Power Input

Outdoor temperature (°C, DB)	Indoor temperature (°C, DB)											
	16.0		18.0		20.0		21.0		22.0		24.0	
	TC	PI	TC	PI	TC	PI	TC	PI	TC	PI	TC	PI
	kW	kW	kW	kW	kW	kW	kW	kW	kW	kW	kW	kW
-15.0	3.86	2.30	3.82	2.27	3.78	2.25	3.74	2.23	3.70	2.21	3.67	2.18
-10.0	5.07	2.54	5.02	2.51	4.97	2.49	4.92	2.47	4.87	2.44	4.82	2.42
7.0	5.71	1.96	5.66	1.94	5.60	1.92	5.54	1.90	5.49	1.88	5.43	1.86
24.0	6.38	1.82	6.31	1.80	6.25	1.78	6.19	1.76	6.13	1.74	6.06	1.73

- Capacities are based on following conditions;

. Cooling mode indoor air temperature (°C, DB/WB) : 20/14, 22/16, 25/18, 27/19, 30/22, 32/24

. Heating mode outdoor air : 85%RH. However, the condition rated capacity is 7°C DB / 6°C WB.

. Refrigerant piping length : 5m

. Level difference : 0m.

3 Capacity table

Ceiling

AC052HBCDEH/EU + AC052FCADEH/EU

Cooling

TC(Total Capacity), SHC(Sensible Heat Capacity), PI(Power Input)

Outdoor temperature (°C, DB)	Indoor temperature (°C, WB)																	
	14.0			16.0			18.0			19.0			22.0			24.0		
	TC	SHC	PI	TC	SHC	PI	TC	SHC	PI	TC	SHC	PI	TC	SHC	PI	TC	SHC	PI
-15.0	5.15	3.86	1.40	5.28	3.96	1.44	5.41	4.06	1.47	5.54	4.16	1.51	5.67	4.25	1.55	5.81	4.36	1.58
21.0	5.20	3.90	1.39	5.32	3.99	1.42	5.46	4.09	1.45	5.59	4.19	1.49	5.72	4.29	1.53	5.86	4.40	1.56
35.0	4.65	3.49	1.54	4.76	3.57	1.58	4.88	3.66	1.62	5.00	3.75	1.66	5.12	3.84	1.70	5.24	3.93	1.74
46.0	4.00	3.00	2.14	4.10	3.07	2.19	4.20	3.15	2.24	4.30	3.23	2.30	4.40	3.30	2.36	4.51	3.38	2.41

Heating

TC : Total Capacity, PI: Power Input

Outdoor temperature (°C, DB)	Indoor temperature (°C, DB)											
	16.0		18.0		20.0		21.0		22.0		24.0	
	TC	PI	TC	PI	TC	PI	TC	PI	TC	PI	TC	PI
-15.0	3.95	2.14	3.91	2.12	3.87	2.10	3.83	2.08	3.79	2.06	3.76	2.04
-10.0	4.90	2.25	4.85	2.23	4.80	2.21	4.75	2.19	4.70	2.17	4.66	2.14
7.0	6.12	1.91	6.06	1.89	6.00	1.87	5.94	1.85	5.88	1.83	5.82	1.81
24.0	7.75	1.88	7.68	1.86	7.60	1.84	7.52	1.82	7.45	1.80	7.37	1.79

AC071HBCDEH/EU + AC071FCADEH/EU

Cooling

TC(Total Capacity), SHC(Sensible Heat Capacity), PI(Power Input)

Outdoor temperature (°C, DB)	Indoor temperature (°C, WB)																	
	14.0			16.0			18.0			19.0			22.0			24.0		
	TC	SHC	PI	TC	SHC	PI	TC	SHC	PI	TC	SHC	PI	TC	SHC	PI	TC	SHC	PI
-15.0	6.83	5.47	1.16	7.00	5.60	1.19	7.17	5.74	1.22	7.35	5.88	1.25	7.53	6.02	1.28	7.71	6.17	1.31
21.0	6.70	5.36	1.58	6.87	5.49	1.62	7.04	5.63	1.66	7.21	5.77	1.70	7.38	5.91	1.74	7.56	6.05	1.78
35.0	6.60	5.28	2.19	6.76	5.41	2.25	6.93	5.54	2.30	7.10	5.68	2.36	7.27	5.82	2.42	7.44	5.96	2.47
43.0	5.37	4.30	2.48	5.51	4.40	2.54	5.64	4.51	2.61	5.78	4.62	2.67	5.92	4.73	2.73	6.06	4.85	2.80
50.0	4.76	3.81	2.58	4.88	3.90	2.65	5.00	4.00	2.71	5.12	4.10	2.78	5.24	4.19	2.85	5.37	4.29	2.92

Heating

TC : Total Capacity PI: Power Input

Outdoor temperature (°C, DB)	Indoor temperature (°C, DB)											
	16.0		18.0		20.0		21.0		22.0		24.0	
	TC	PI	TC	PI	TC	PI	TC	PI	TC	PI	TC	PI
-15.0	5.34	3.11	5.28	3.08	5.23	3.05	5.18	3.02	5.13	2.99	5.07	2.96
-10.0	6.88	2.93	6.81	2.90	6.74	2.87	6.67	2.84	6.61	2.81	6.54	2.78
7.0	8.16	2.81	8.08	2.78	8.00	2.75	7.92	2.72	7.84	2.70	7.76	2.67
24.0	8.61	2.90	8.52	2.87	8.44	2.84	8.36	2.81	8.27	2.78	8.19	2.76

- Capacities are based on following conditions:

- . Cooling mode indoor air temperature (°C, DB/WB) : 20/14, 22/16, 25/18, 27/19, 30/22, 32/24
- . Heating mode outdoor air : 85%RH. However, the condition rated capacity is 7°C DB / 6°C WB.
- . Refrigerant piping length : 5m
- . Level difference : 0m.

4 Dimensional drawing

Console

AC052HBJDEH/EU

Units : mm / inches

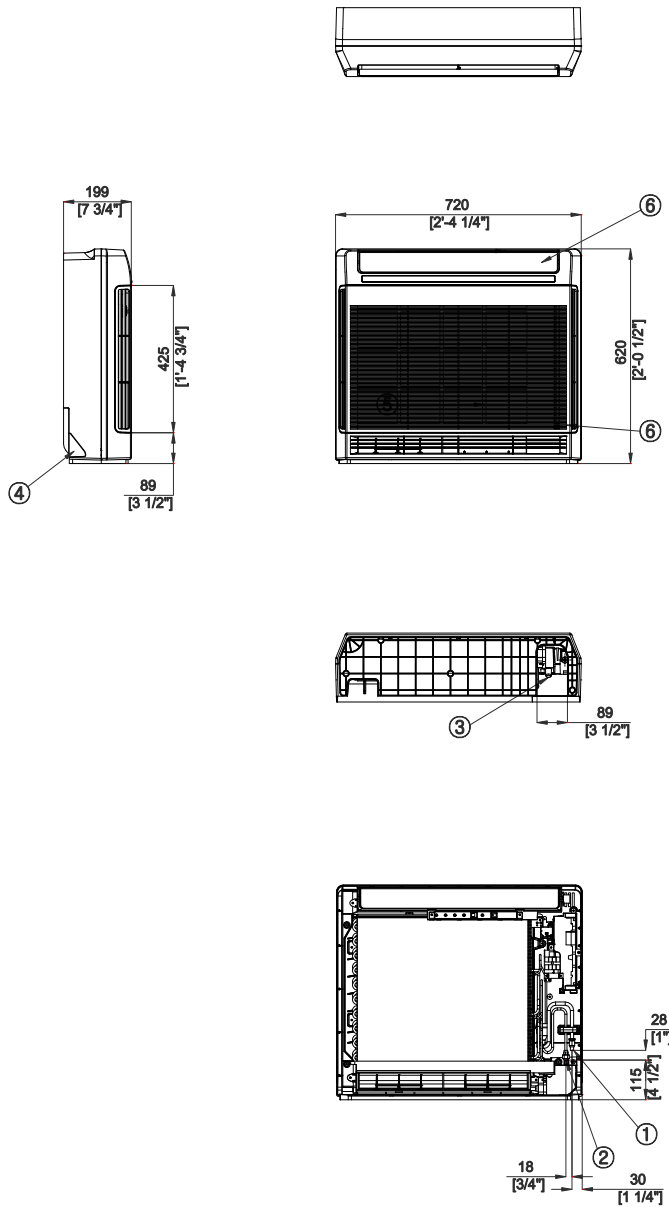


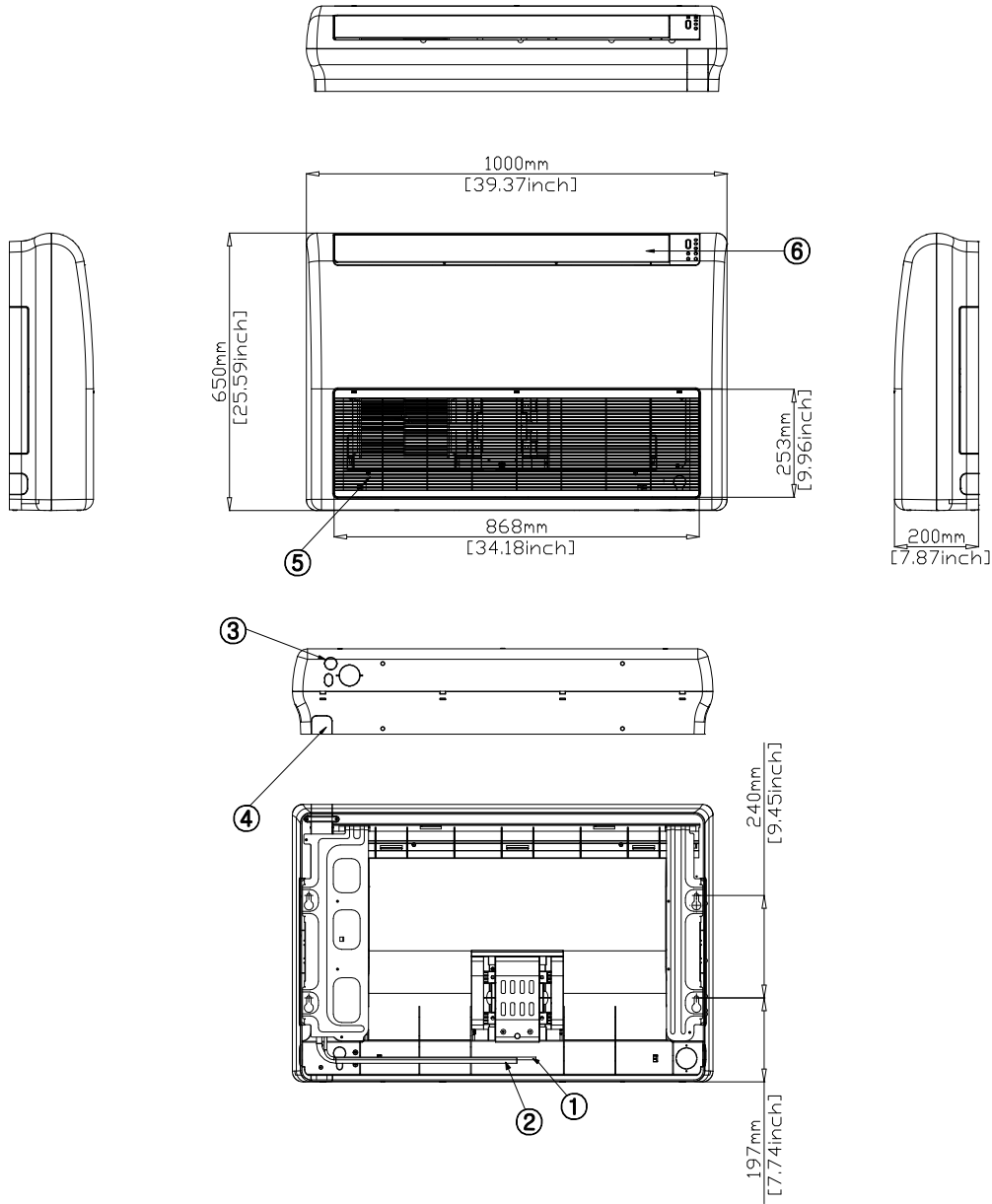
Table of descriptions

1	Refrigerant gas pipe	7	
2	Refrigerant liquid pipe	8	
3	Condensate drain	9	
4	Power & Comm. wiring conduits	10	
5	Air Inlet grille	11	
6	Air Outlet grille	12	

4 Dimensional drawing

Ceiling

AC052HBCDEH/EU, AC071HBCDEH/EU

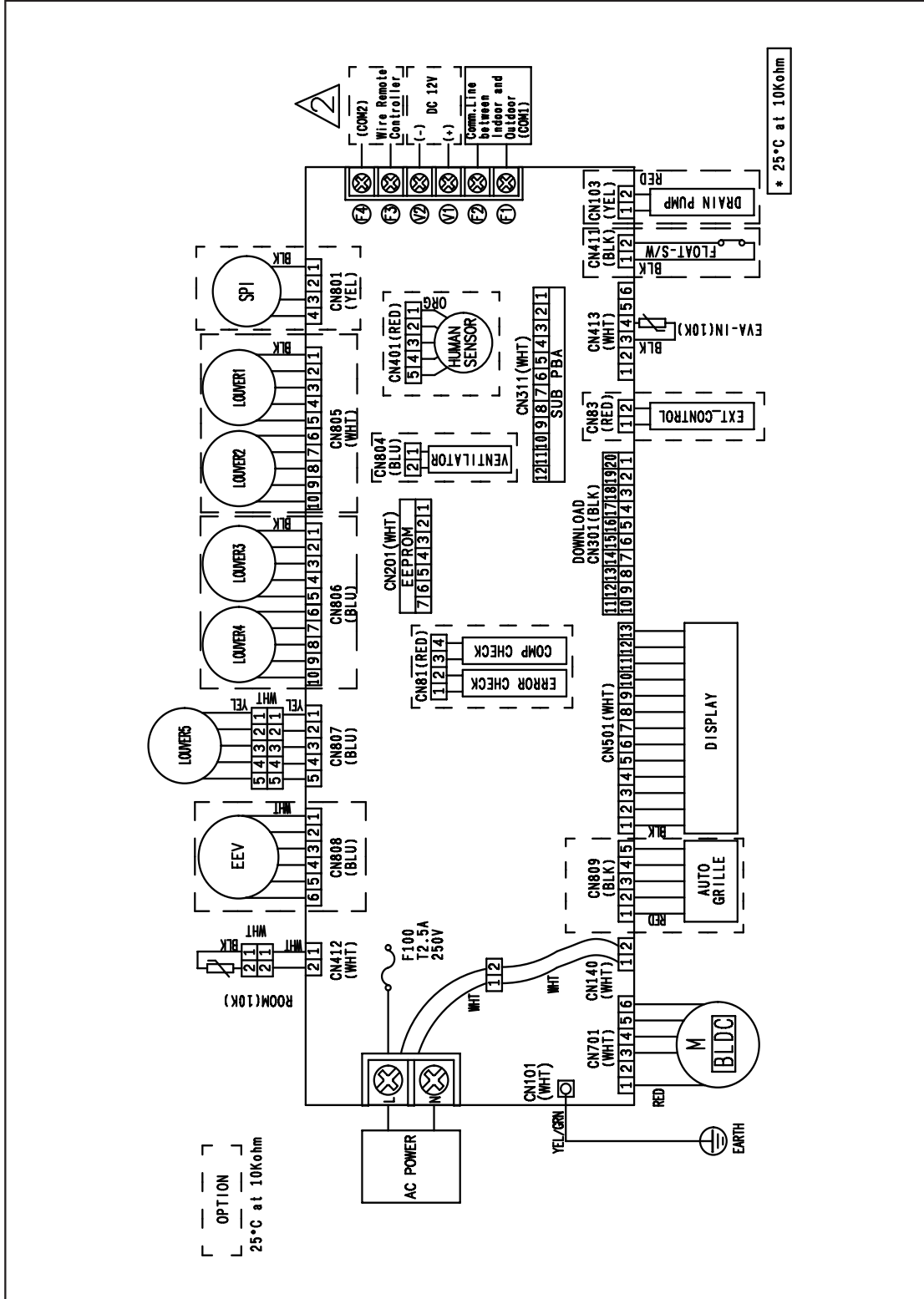


No.	Name
①	Liquid Ref. Pipe
②	Gas Ref. Pipe
③	Drain pipe connection
④	Power & Communication Wiring Conduit
⑤	Air inlet grille
⑥	Air outlet louver

5 Electrical wiring diagram

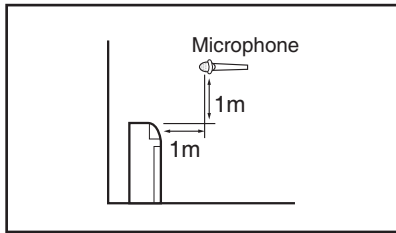
Ceiling

AC052HBCDEH/EU, AC071HBCDEH/EU



6 Sound pressure level

Console



Unit: dB(A)

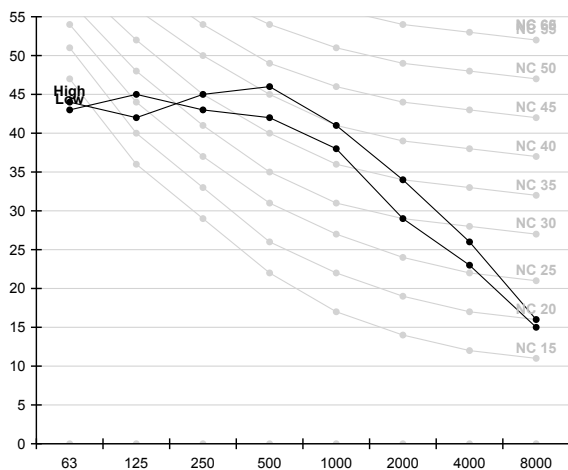
Model	High	Low
AC052HBJDEH/EU (ODU : AC052FCADDEH/EU)	44.0	25.0

Note

- > Measuring place: Anechoic chamber (conversion value)
- > These operation values were obtained in an anechoic room. Sound pressure level will vary depending on a range of factors such as the construction of the particular room where the equipment is installed.
- > Operation sound level may differ depending on operation and ambient conditions.)

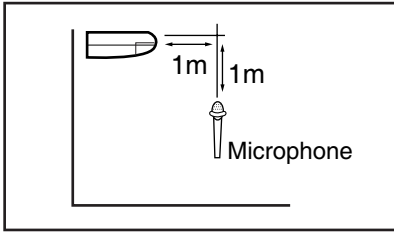
NC curve

1) AC052HBJDEH/EU (ODU : AC052FCADDEH/EU)



6 Sound pressure level

Ceiling



Unit: dB(A)

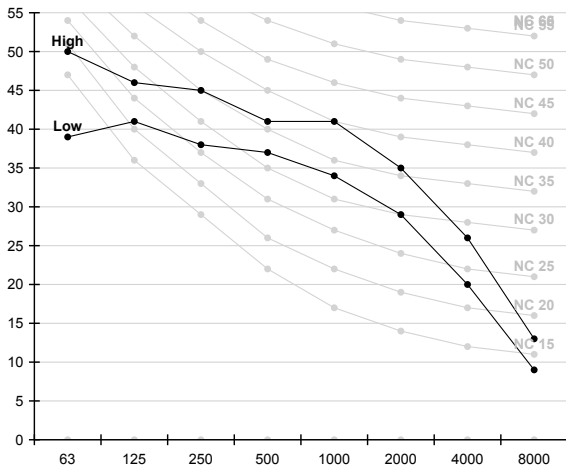
Model	High	Low
AC052HBCDEH/EU (ODU : AC052FCADDEH/EU)	41.0	37.0
AC071HBCDEH/EU (ODU : AC071FCADDEH/EU)	46.0	42.0

Note

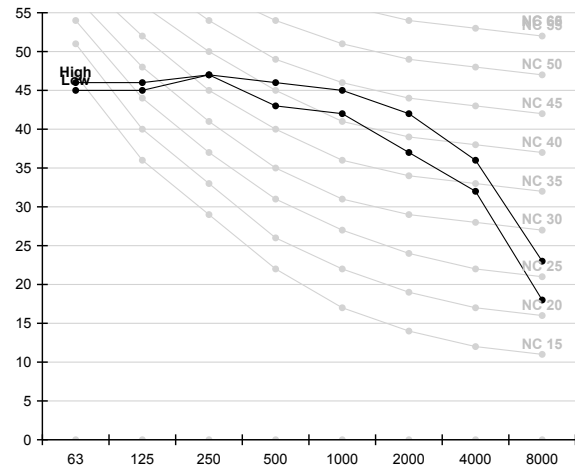
- > Measuring place: Anechoic chamber (conversion value)
- > These operation values were obtained in an anechoic room. Sound pressure level will vary depending on a range of factors such as the construction of the particular room where the equipment is installed.
- > Operation sound level may differ depending on operation and ambient conditions.)

NC curve

1) AC052HBCDEH/EU (ODU : AC052FCADDEH/EU)



2) AC071HBCDEH/EU (ODU : AC071FCADDEH/EU)



7 Sound power level

Console

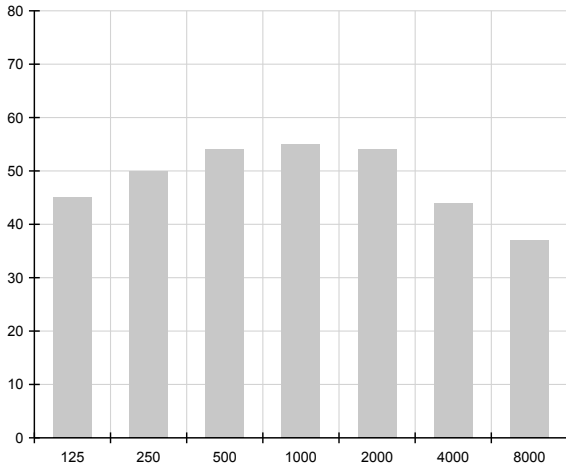
Note

dBA = A-weighted sound power level.
Reference power : 1pW.
Measured according to ISO 3741.

Unit: dB(A)

Model	Power
AC052HBJDEH/EU (ODU : AC052FCADDEH/EU)	60.0

1) AC052HBJDEH/EU (ODU : AC052FCADDEH/EU)



7 Sound power level

Ceiling

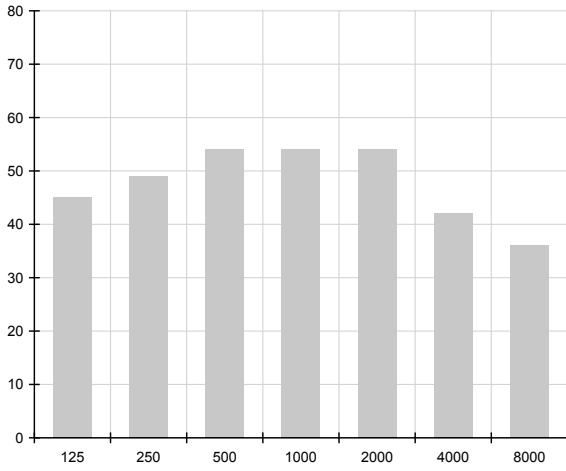
Note

dBA = A-weighted sound power level.
Reference power : 1pW.
Measured according to ISO 3741.

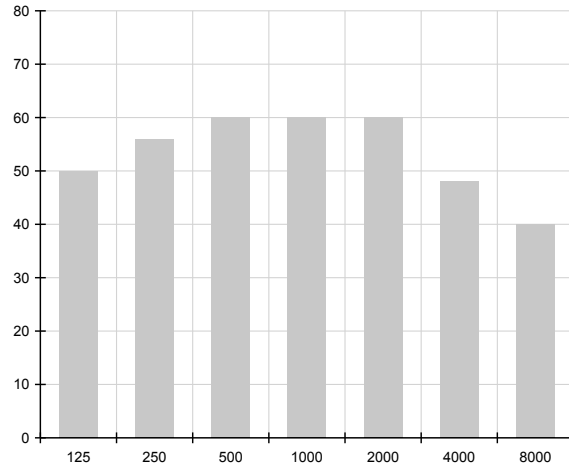
Unit: dB(A)

Model	Power
AC052HBCDEH/EU (ODU : AC052FCADEH/EU)	60.0
AC071HBCDEH/EU (ODU : AC071FCADEH/EU)	64.0

1) AC052HBCDEH/EU (ODU : AC052FCADEH/EU)



2) AC071HBCDEH/EU (ODU : AC071FCADEH/EU)



8 Sound power level

Outdoor

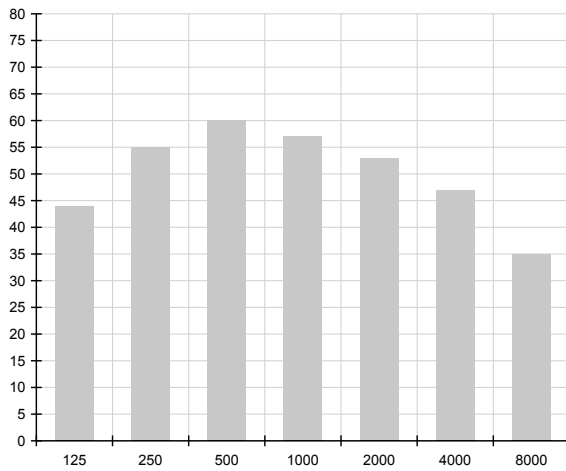
Note

dBA = A-weighted sound power level.
Reference power : 1pW.
Measured according to ISO 3741.

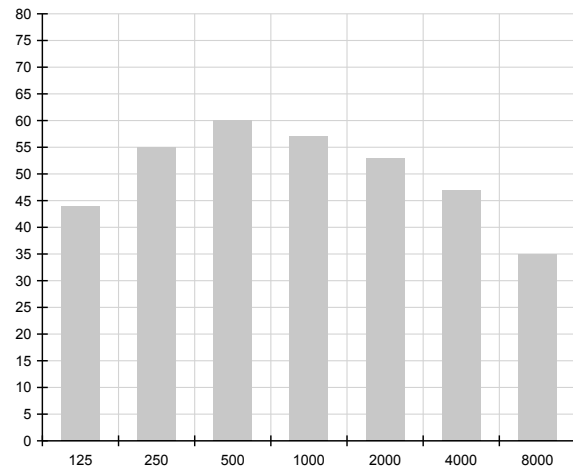
Unit: dB(A)

Model	Power
AC052FCADEH/EU (IDU : AC052HBCDEH/EU)	64.0
AC052FCADEH/EU (IDU : AC052HBJDEH/EU)	64.0
AC071FCADEH/EU (IDU : AC071HBCDEH/EU)	66.0

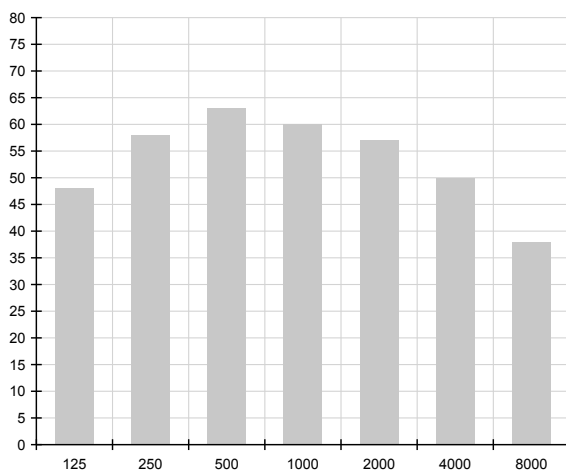
1) AC052FCADEH/EU (IDU : AC052HBCDEH/EU)



2) AC052FCADEH/EU (IDU : AC052HBJDEH/EU)



3) AC071FCADEH/EU (IDU : AC071HBCDEH/EU)



2015.06
Ver 1.1



Samsung Electronics Co., LTD.
B2B PM / SE

Head Office (Suwon Korea) 129, Samsung-Ro, Yeongtong-Gu, Suwon City, Gyeonggi-Do, Korea 443-742
Website : www.samsung.com/global/business/system-air-conditioner Email : airconditioner@samsung.com
Images and data in this book may subject to change without prior notice.