

0.6 HP Indoor Unit for SMMS-i and SHRM-i

We are pleased to introduce you that we will release "0.6HP Indoor Unit" for SMMS-i and SHRM-i.
Please supply this new item for your sales expansion according to your increasing customer's needs.



1. Model name

For Europe

Type	Capacity (kW) Cooling/Heating	Model name	Product code	EAN13 code No	Note
Compact 4-way Cassette	1.7 / 1.9	MMU-AP0054MH-E	807B7754	4904550667354	
Slim Duct	1.7 / 1.9	MMD-AP0054SPH-E	807B7756	4904550667378	

For Turkey

HP	Capacity (kW) Cooling/Heating	Model name	Product code	EAN13 code No	Note
Compact 4-way Cassette	1.7 / 1.9	MMU-AP0054MH-TR	807B7755	4904550667361	
Slim Duct	1.7 / 1.9	MMD-AP0054SPH-TR	807B7757	4904550667385	

2. Production date

October 2013 { Ex-factory from TCC (Japan) }

3. Connectable Outdoor Unit

SMMS-i TCTC Made after September
SHRM-i TCC Made after September

4. Feature

1. Compact & light weight
2. Enable to select suitable FCUs for small rooms.

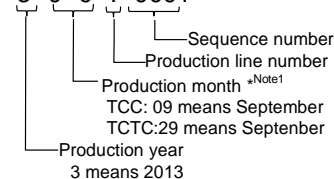
5. Notes

1. The software of the outdoor unit will be upgraded to be connected with these units.
2. The system does not work when you connect the outdoor unit prior to August.
3. The system does not work when you connect the MiNi SMMS and SMMS 5,6HP.
4. The software of Modbus I/F (TCB-IFMB641TLE) will be upgrade on September to be connected with these units.
5. The other BMS units (current models) enable to connect with these units.

We can check Production Month by the serial number.

Serial Number Pattern

3 0 9 1 0001



*Note1

TCC	TCTC	Month
01	21	January
02	22	February
03	23	March
04	24	April
05	25	May
06	26	June
07	27	July
08	28	August
09	29	September
10	30	October
11	31	November
12	32	December

TOSHIBA CARRIER CORPORATION

矢口部真一

Shinichi YAKABE
GROUP MANAGER
PLANNING GROUP
PRODUCTS PLANNING DEPARTMENT
PRODUCTS PLANNING DIVISION

Specifications

Compact 4-way Cassette (600 x 600) Type

(50Hz)

Model name		MMU-	AP0054MH-E	AP0074MH-E	AP0094MH-E	AP0124MH-E	AP0154MH-E	AP0184MH-E
Cooling/Heating capacity (Note 1)		(kW)	1.7/1.9	2.2/2.5	2.8/3.2	3.6/4.0	4.5/5.0	5.6/6.3
Electrical characteristics	Power supply		1phase 50Hz 230V(220V-240V) (Separate power supply for indoor units is required)					
	Running current (A)		0.28	0.28	0.30	0.31	0.34	0.42
	Power consumption (kW)		0.034	0.034	0.036	0.038	0.041	0.052
	Starting current (A)		0.49	0.49	0.52	0.54	0.59	0.73
Appearance	Main unit		Zinc hot dipping steel plate *Heat-insulating material attached to only upper plate					
	Ceiling Panel	Model	RBC-UM11PG(W)E					
		Panel color	Moon white (Munsell/2.5GY 9.0/0.5)					
Outer dimension	Main unit	Height (mm)	268					
		Width (mm)	575					
		Depth (mm)	575					
	Ceiling Panel	Height (mm)	27					
		Width (mm)	700					
		Depth (mm)	700					
Total weight	Main unit (kg)		17					
	Ceiling Panel (kg)		3					
Heat exchanger		Finned tube						
Soundproof / Heat-insulating material		Non-flammable insulation						
Fan	Fan		Turbo fan					
	Standard air flow (High/Mid/Low) (m3/h)		486/462/378	552/462/378	570/468/378	594/504/402	660/552/468	762/642/522
	Motor output (W)		60					
Air filter		Long life filter						
Controller		Remote controller						
Connecting pipe	Gas side (mm)		φ 9.5			φ 12.7		
	Liquid side (mm)		φ 6.4					
	Drain port(Nomal dia. mm)		25(Polyvinyl chloride tube)					
Sound pressure level (Note 2) High/Med./Low		(dB(A))	35/32/28	36/32/28	37/33/28	37/33/29	40/35/30	44/39/34
PMV Kit		Available						

SPECIFICATIONS

Slim Duct Type

(60Hz)

Model name		MMD-AP0054SPH-E	AP0074SPH-E	AP0094SPH-E	AP0124SPH-E	AP0154SPH-E	AP0184SPH-E	AP0244SPH-E	AP0274SPH-E	
Cooling/Heating capacity (Note 1) (kW)		1.7/1.9	2.2/2.5	2.8/3.2	3.6/4.0	4.5/5.0	5.6/6.3	7.1/8.0	8.0/9.0	
Electrical characteristics	Power supply	1phase 60Hz 220V						1phase 60Hz 220V		
	Running current (A)	0.27	0.27	0.27	0.30	0.31	0.37	0.78		
	Power consumption (kW)	0.037	0.037	0.037	0.041	0.043	0.052	0.105		
	Starting current (A)	0.47	0.47	0.47	0.53	0.54	0.65	1.17		
Appearance		Zinc hot dipping steel plate						Zinc hot dipping steel plate		
Dimension	Height (mm)	210						210		
	Width (mm)	845						1140		
	Depth (mm)	645						645		
Total weight (kg)		22				23		29		
Heat exchanger		Finned tube						Finned tube		
Soundproof / Heat-insulating material		Polyethylene foam + Polyurethane foam						Polyethylene foam + Polyurethane foam		
Fan		Centrifugal fan (Sirocco fan)						Centrifugal fan (Sirocco fan)		
Standard air flow	High (m3/h)	490	540	600	690	780	1080			
	(Med./Low) (m3/h)	470/400	470/400	520/450	600/520	680/580	1000/900			
Motor output (W)		60						120		
External static pressure (Pa)		6(Factory setting) -16-31-46 4steps			5(Factory setting) -15-30-45 4steps		4(Factory setting) -14-29-44 4steps	2-12-22-42 (4steps) 42(Factory setting)		
Air filter pressure loss (Pa)		4			5		6	8		
Controller		Remote controller						Remote controller		
Air filter		Standard filter (Long life filter)						Standard filter (Long life filter)		
Connecting pipe	Gas side (mm)	φ9.5				φ12.7		15.9		
	Liquid side (mm)	φ6.4						9.5		
	Drain port (mm)	25(Polyvinyl chloride tube)						25(Polyvinyl chloride tube)		
Sound pressure level (Note High/Med./Low)	Under air inlet (dB(A))	35/33/30	36/33/30	38/35/32	39/36/33	40/38/36	49/47/44			
	Back air inlet (dB(A))	27/26/24	28/26/24	29/27/25	32/30/28	33/31/29	38/36/33			

SPECIFICATIONS

Slim Duct Type

(50Hz)

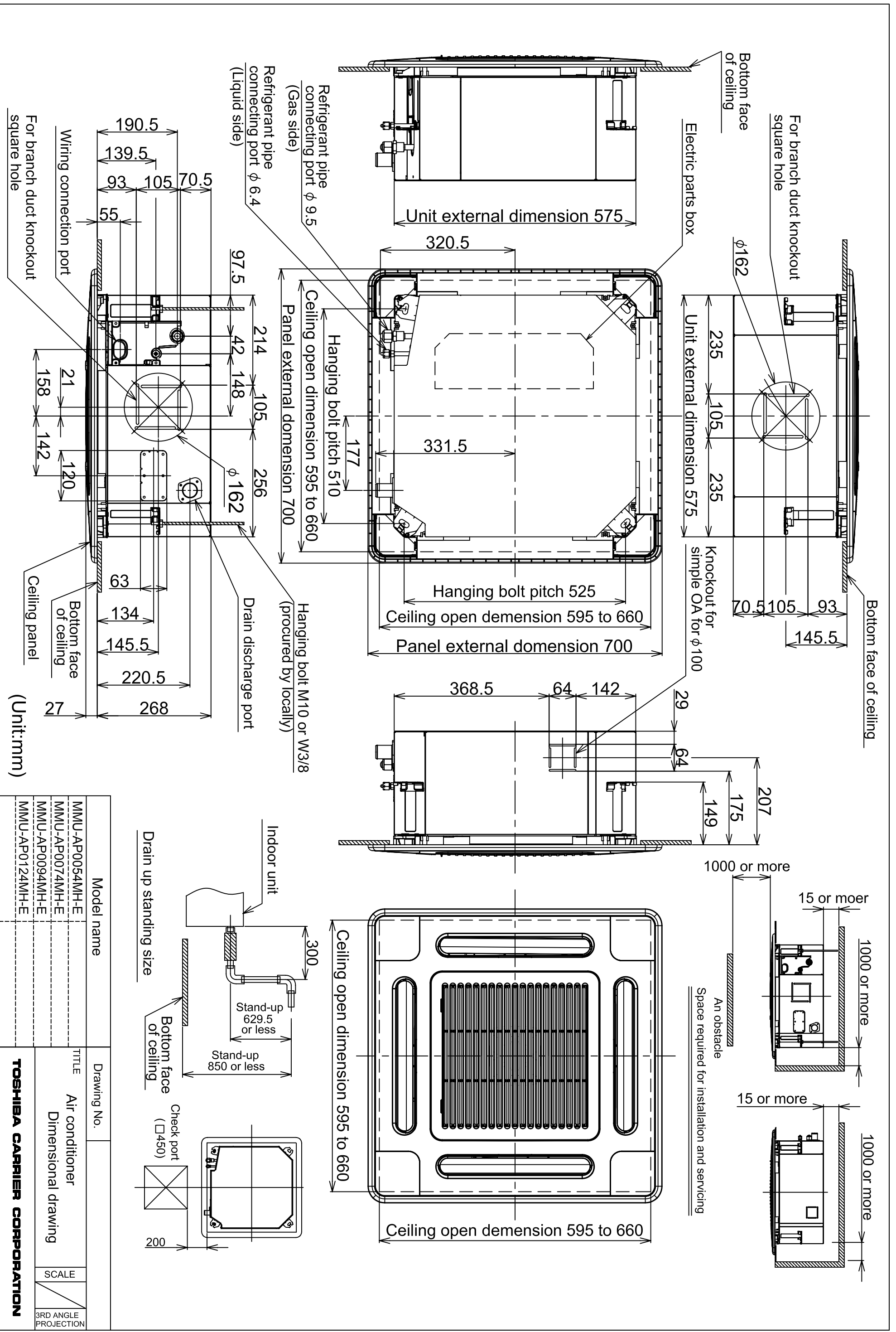
Model name		MMD-AP0054SPH-E	AP0074SPH-E	AP0094SPH-E	AP0124SPH-E	AP0154SPH-E	AP0184SPH-E	AP0244SPH-E(-TR)	AP0274SPH-E(-TR)
Cooling/Heating capacity (Note 1) (kW)		1.7/1.9	2.2/2.5	2.8/3.2	3.6/4.0	4.5/5.0	5.6/6.3	7.1/8.0	8.0/9.0
Electrical characteristics	Power supply	1phase 50Hz 230V(220V-240V)						1phase 50Hz 230V(220V-240V)	
	Running current (A)	0.29	0.29	0.29	0.31	0.32	0.39	0.75	
	Power consumption (kW)	0.039	0.039	0.039	0.043	0.045	0.054	0.105	
	Starting current (A)	0.51	0.51	0.51	0.54	0.56	0.68	1.13	
Appearance		Zinc hot dipping steel plate						Zinc hot dipping steel plate	
Dimension	Height (mm)	210						210	
	Width (mm)	845						1140	
	Depth (mm)	645						645	
Total weight (kg)		22				23		29	
Heat exchanger		Finned tube						Finned tube	
Soundproof / Heat-insulating material		Polyethylene foam + Polyurethane foam						Polyethylene foam + Polyurethane foam	
Fan		Centrifugal fan (Sirocco fan)						Centrifugal fan (Sirocco fan)	
Standard air flow	High (m3/h)	490	540	600	690	780	1080		
	(Med./Low) (m3/h)	470/400	470/400	520/450	600/520	680/580	1000/900		
Motor output (W)		60						120	
External static pressure (Pa)		6(Factory setting) -16-31-46 4steps			5(Factory setting) -15-30-45 4steps		4(Factory setting) -14-29-44 4steps	2-12-22-42(Factory setting) 4steps	
Air filter pressure loss (Pa)		4			5		6	8	
Controller		Remote controller						Remote controller	
Air filter		Standard filter (Long life filter)						Standard filter (Long life filter)	
Connecting pipe	Gas side (mm)	φ9.5				φ12.7		φ15.9	
	Liquid side (mm)	φ6.4						φ9.5	
	Drain port (mm)	25(Polyvinyl chloride tube)						25(Polyvinyl chloride tube)	
Sound pressure level (Note) High/Med./Low	Under air inlet (dB(A))	35/33/30	36/33/30	38/35/32	39/36/33	40/38/36	49/47/44		
	Back air inlet (dB(A))	27/26/24	28/26/24	29/27/25	32/30/28	33/31/29	38/36/33		

Specifications

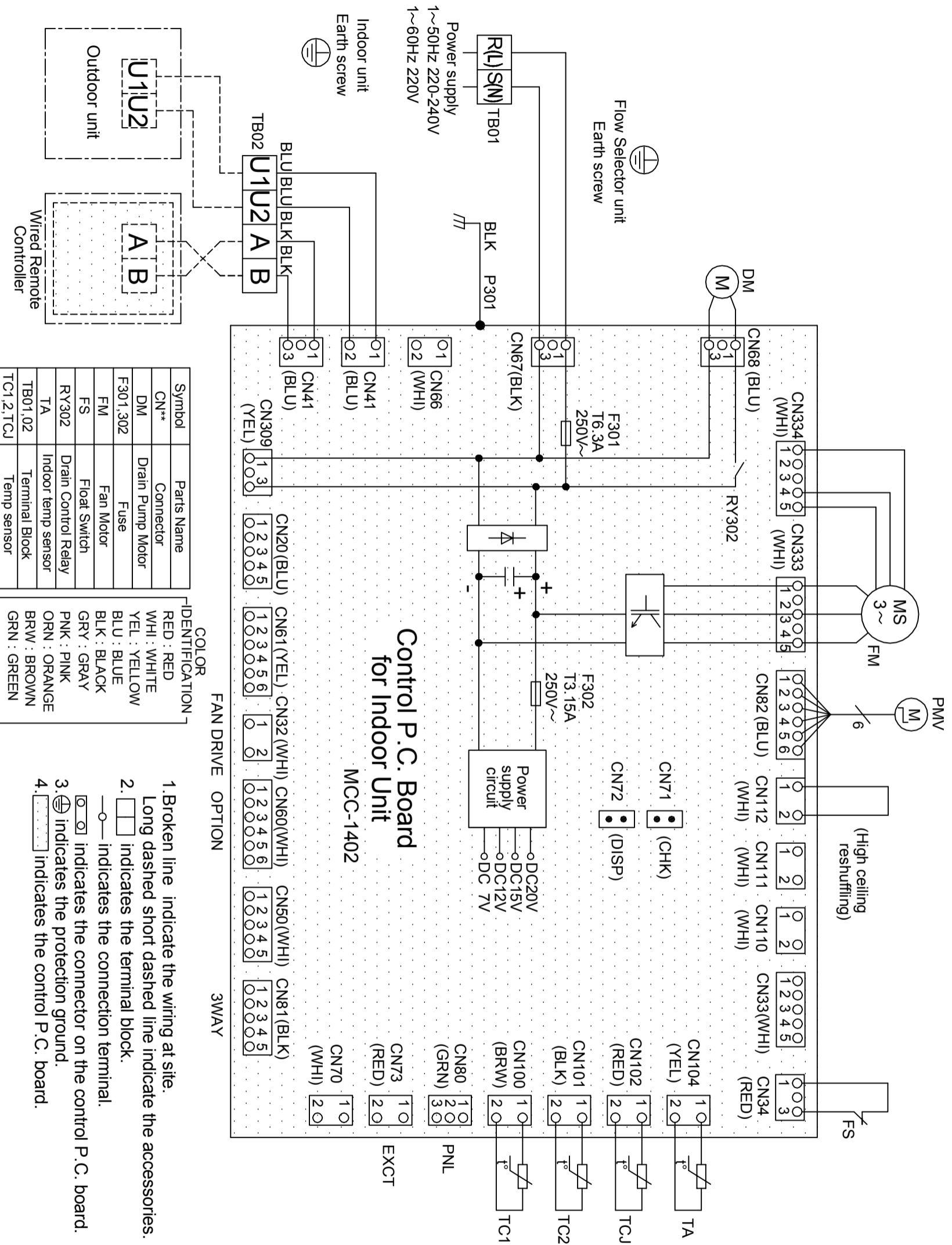
Compact 4-way Cassette (600 x 600) Type

(60Hz)

Model name		MMU-	AP0054MH-E	AP0074MH-E	AP0094MH-E	AP0124MH-E	AP0154MH-E	AP0184MH-E	
Cooling/Heating capacity (Note 1)		(kW)	1.7/1.9	2.2/2.5	2.8/3.2	3.6/4.0	4.5/5.0	5.6/6.3	
Electrical characteristics	Power supply		1phase 50Hz 230V(220V-240V) (Separate power supply for indoor units is required)						
	Running current (A)		0.27	0.27	0.29	0.30	0.33	0.41	
	Power consumption (kW)		0.034	0.034	0.036	0.038	0.041	0.052	
	Starting current (A)		0.49	0.49	0.52	0.54	0.59	0.73	
Appearance	Main unit		Zinc hot dipping steel plate *Heat-insulating material attached to only upper plate						
	Ceiling Panel	Model	RBC-UM11PG(W)E						
		Panel color	Moon white (Munsell/2.5GY 9.0/0.5)						
Outer dimension	Main unit	Height (mm)	268						
		Width (mm)	575						
		Depth (mm)	575						
	Ceiling Panel	Height (mm)	27						
		Width (mm)	700						
		Depth (mm)	700						
Total weight	Main unit (kg)		17						
	Ceiling Panel (kg)		3						
Heat exchanger		Finned tube							
Soundproof / Heat-insulating material		Non-flammable insulation							
Fan	Fan		Turbo fan						
	Standard air flow (High/Mid/Low) (m3/h)		486/462/378	552/462/378	570/468/378	594/504/402	660/552/468	762/642/522	
	Motor output (W)		60						
Air filter		Long life filter							
Controller		Remote controller							
Connecting pipe	Gas side (mm)		φ 9.5			φ 12.7			
	Liquid side (mm)		φ 6.4						
	Drain port(Nomal dia. mm)		25(Polyvinyl chloride tube)						
Sound pressure level (Note 2) High/Med./Low		(dB(A))	35/32/28	36/32/28	37/33/28	37/33/29	40/35/30	44/39/34	
PMV Kit		Available							



Model name	MMU-AP0054MH-E	Drawing No.	TITLE
	MMU-AP0074MH-E		Air conditioner
	MMU-AP0094MH-E		Dimensional drawing
	MMU-AP0124MH-E		
TOSHIBA CARRIER CORPORATION		SCALE	3RD ANGLE PROJECTION



Symbol	Parts Name
CN**	Connector
DM	Drain Pump Motor
F301,302	Fuse
FM	Fan Motor
FS	Fan Switch
RY302	Drain Control Relay
TA	Indoor temp sensor
TB01,02	Terminal Block
TC1,2,TCJ	Temp sensor

IDENTIFICATION	
RED	: RED
WHI	: WHITE
YEL	: YELLOW
BLU	: BLUE
BLK	: BLACK
GRY	: GRAY
PNK	: PINK
ORN	: ORANGE
BRW	: BROWN
GRN	: GREEN

1. Broken line indicate the wiring at site.
2. Long dashed short dashed line indicate the accessories.
3. indicates the connection terminal.
4. indicates the protection ground.

Model name		Drawing No.	
MMD-AP0054SPH-E	MMD-AP0054SPH-TR	MMD-AP0184SPH-E	MMD-AP0184SPH-TR
MMD-AP0074SPH-E	MMD-AP0074SPH-TR		
MMD-AP0094SPH-E	MMD-AP0094SPH-TR		
MMD-AP0124SPH-E	MMD-AP0124SPH-TR		
MMD-AP0154SPH-E	MMD-AP0154SPH-TR		

TITLE		SCALE	
Air conditioner		3RD ANGLE PROJECTION	
Wiring drawing			
TOSHIBA CARRIER CORPORATION			